

# Gift Planning Guide



**BOLD  
& BLUE**

**SOUTH DAKOTA STATE UNIVERSITY FOUNDATION**



“Thank you for considering South Dakota State University in your future philanthropic efforts. Generations of Jackrabbit families have collectively created a better future for SDSU students, faculty, and staff through their gifts to the university. I hope this guide is beneficial to you as you begin to envision what SDSU’s future holds.”

-Barry H. Dunn  
President, South Dakota State University

#### **TABLE OF CONTENTS**

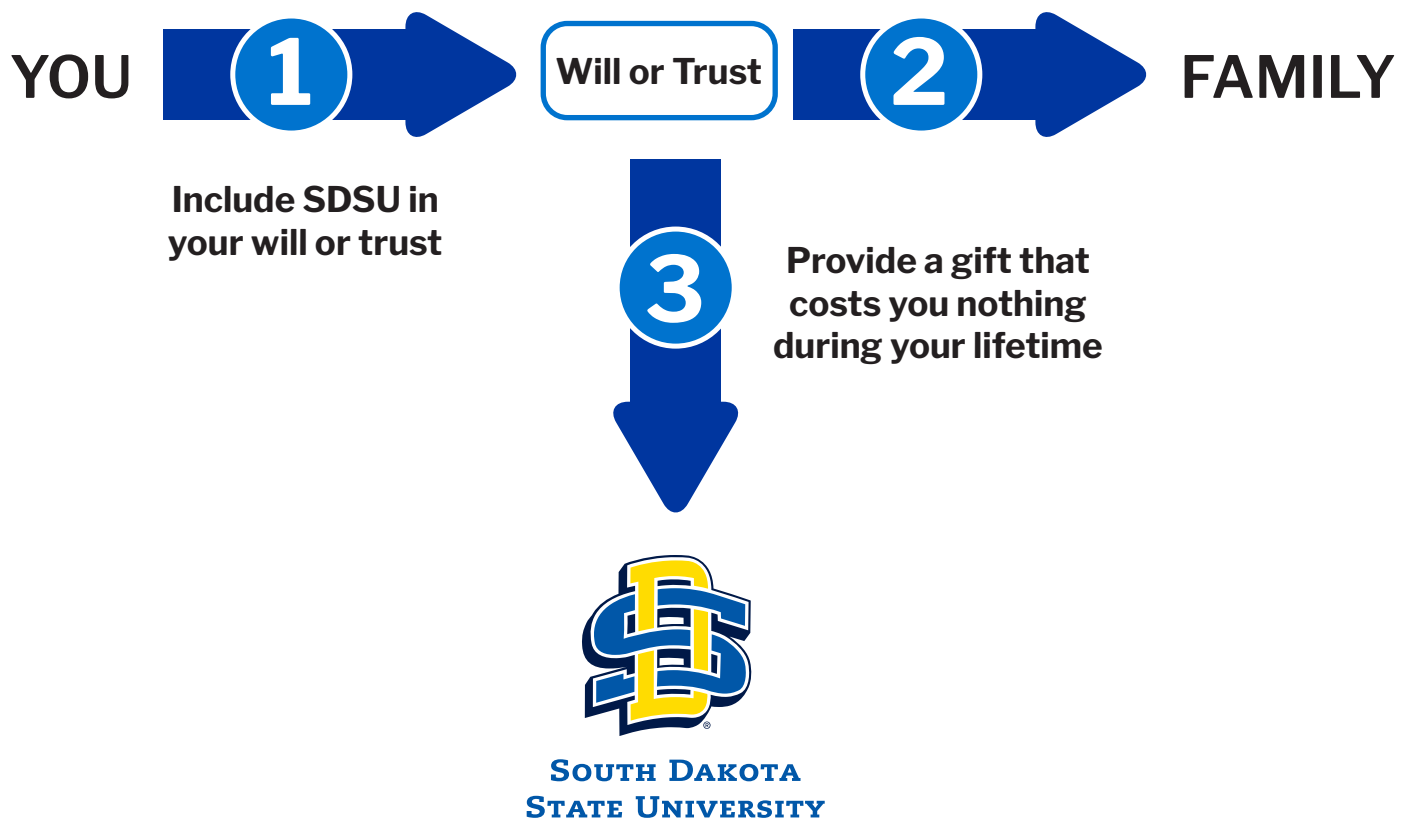
- 3 Will or Living Trust Gift
- 4 Beneficiary Designation of Retirement Assets
- 5 “Our Turn to Give Back”
- 6 Charitable IRA Rollover Gifts
- 7 Appreciated Securities Gifts
- 8 Life Income Gifts  
(Charitable Remainder Trust)
- 9 Income Gifts for Heirs and Charity  
(Give-It-Twice)
- 10 “Gees Give Back to  
What They Care About”
- 12 Real Estate Gifts
- 13 Retained Life Estate
- 14 Gifts of Grain, Livestock,  
or Machinery
- 15 Sylvan Circle: The Legacy Society  
for South Dakota State University

## Will or Living Trust Gift

A simple gift through your will or living trust is known as a bequest. Many Jackrabbit alumni choose this method of giving through their estate plan for the simplicity of creating the gift.

### BENEFITS

- » You choose the percentage or amount intended for your family, the SDSU Foundation, and any other charities you would like to include
- » You have the ability to change your designations throughout your lifetime



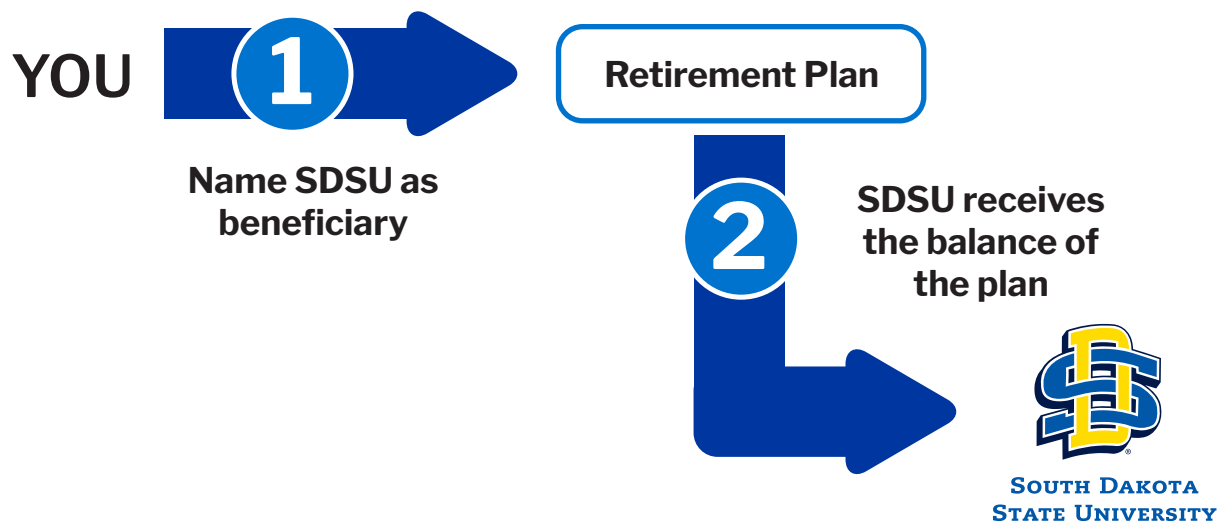
# Beneficiary Designation of Retirement Assets

As Jackrabbits continue through their working years, a larger percentage of many households' wealth is in pre-tax assets, like 401(k)s or traditional IRAs. These accounts, if passed directly to heirs, can result in substantial income taxes: **30-60% or more!**

Many SDSU families are choosing to include the SDSU Foundation as a primary or contingent beneficiary of retirement accounts, ensuring that 100% of their gift goes toward their charitable intentions.

## BENEFITS

- » You can update beneficiary designations without visiting an attorney
- » You can easily change percentage designations throughout your lifetime



## DID YOU KNOW?

Beneficiary designations on retirement accounts will speak before your will or living trust. By including your charitable intentions through designations on retirement accounts, you're helping heirs receive the best possible assets.

## Our Turn to Give Back

By Lura Roti

South Dakota sunsets are among Ven Lengkeek's favorite images to post on Facebook. Recently, a young friend from Milan, Italy, commented on a photo, saying he wanted to bring his toddler son to visit Ven and his wife, Deb, in Brookings so they could witness the natural phenomenon together.

The Lengkeeks met these young friends on a visit to Budapest in September of 2021.

"The world is large, and it has become smaller for us through travel," said Ven, who grew up in Volga while Deb hails from Raymond, South Dakota. "We are hoping we can bring some of the international world back to South Dakota and share with South Dakotans what a wonderful, beautiful world is out there."

To make this a reality, the SDSU graduates worked with the SDSU Foundation's Office of Gift Planning to create an endowment that supports international students studying at SDSU. It is one of five university areas of impact the couple fund annually through a charitable IRA rollover. Because they also named SDSU as one of their beneficiaries, after they are gone, their estate will endow the five areas equally into perpetuity.

In addition to the international affairs endowment, Ven and Deb also endowed funds to support the South Dakota Art Museum, the South Dakota Agricultural Heritage Museum, McCrory Gardens, and the Robert Pengra Scholarship in Microbiology.

**"The nice thing about an IRA gift is that it is not taxable," Ven said. "We can give to the U.S. government and have no idea where it goes, or we can take the same money and give it to SDSU and stipulate exactly where it goes."**



This means a lot to the couple, because each entity they fund is motivated by personal experiences or memories.

One such personal connection is the South Dakota Art Museum. Deb shared that she has been a frequent visitor since it opened its doors in 1970. It was her freshman year, and, as a home economics student, for class credit she sewed all the costumes for Macbeth, one of the first plays performed in its auditorium.

As for McCrory Gardens, Ven explained that, as a work study student at McCrory Gardens, his interest in research was piqued. As an undergraduate wildlife and fisheries major, his job was to help graduate students with data setup and collection for their research projects. The experience launched him on the educational path that eventually led to a Ph.D. in agronomy from SDSU and a successful career with industry-focused research.

Integral to his success was the instruction, mentorship, and guidance he received from Dr. Robert Pengra, SDSU Professor of Microbiology.

"Looking back, the education, the professors, and the experiences at SDSU shaped my career and what I did for my entire life," Ven said. "The university gave us so much. We feel it's our turn to give back."

## Charitable IRA Rollover Gifts

Transitioning into retirement, many philanthropic households want to become more charitable toward the causes they care about deeply. By using the Charitable IRA Rollover option with a qualified charitable distribution (QCD) once they've turned age 70 ½, Jackrabbit alumni and friends can give annually to the charity or charities of their choice by simply informing their financial custodian of their intentions.

### BENEFITS

- » Once you've turned age 73, your QCD can satisfy your annual required minimum distribution (RMD)
- » The gift to the SDSU Foundation allows you to have the same impact with your gift, but with more tax advantages



### DID YOU KNOW?

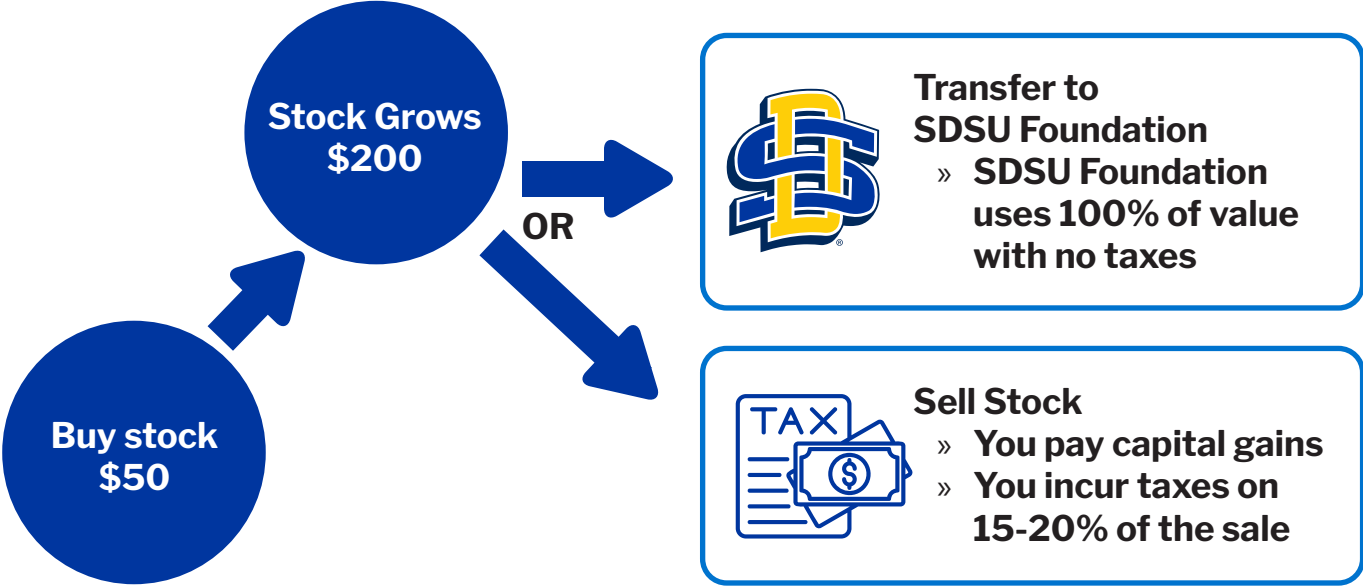
The QCD option with your traditional IRA can help to keep Medicare and Social Security taxes low, as well as your taxable income. It's a triple benefit to use your traditional IRA to give generously!

# Appreciated Securities Gifts

Many Jackrabbits own appreciated securities and stock portfolios, but don't want to cash out their assets due to significant capital gains taxes. By gifting the appreciated stocks to the SDSU Foundation, you can use the full value of the stocks and securities toward helping students at State and face zero tax exposure.

## BENEFITS

- » A great way to gift during your lifetime without writing a check
- » Eliminates any capital gains taxes that would have been due upon sale

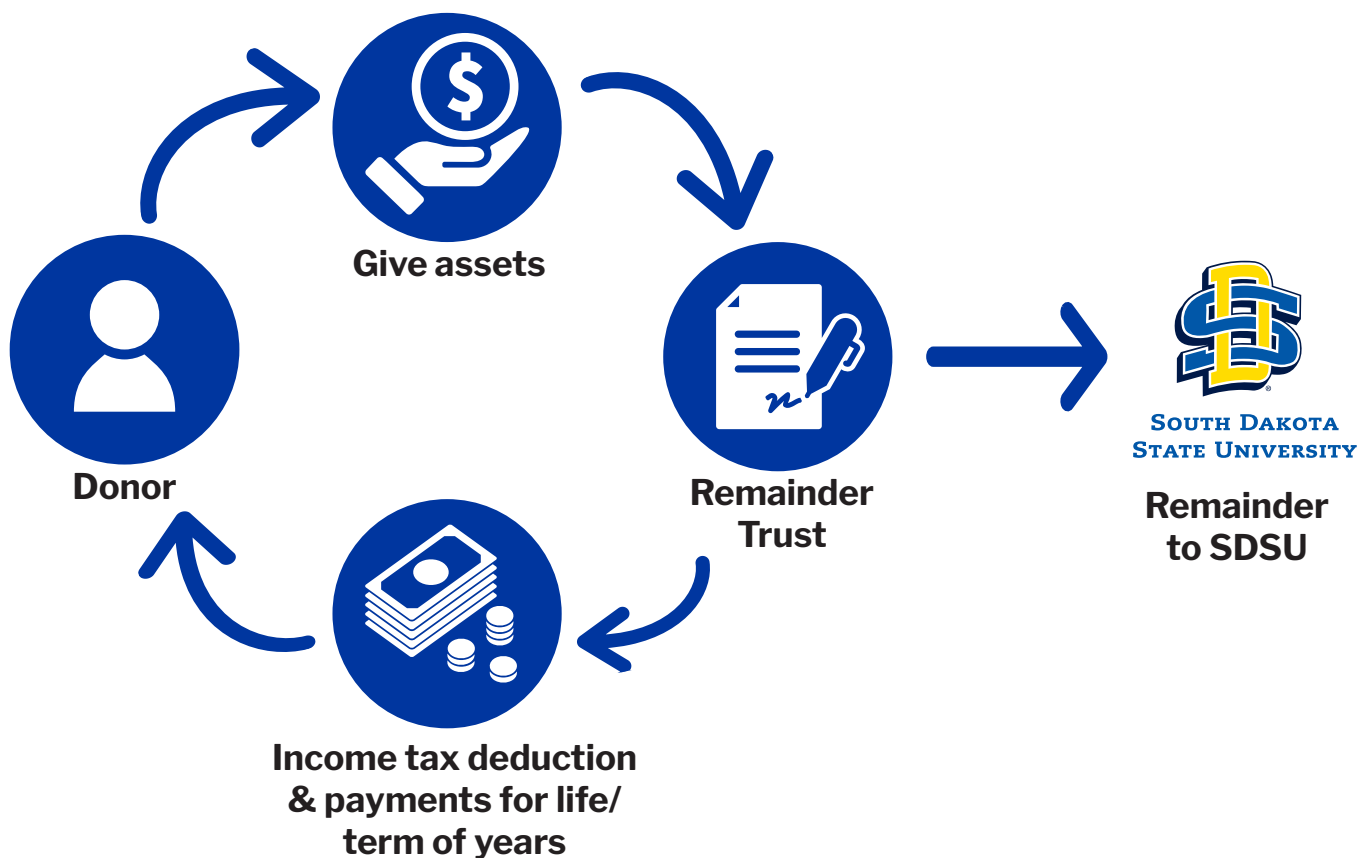


## Life Income Gifts (Charitable Remainder Trust)

Perhaps you'd like to be generous in helping an area of campus at SDSU, but you also want to ensure a comfortable retirement for yourself. A charitable remainder trust can help you with a steady stream of income throughout your life, a sizeable tax deduction upon creation, and a charitable legacy at the charity or charities of your choice!

### BENEFITS

- » You can take an asset with potentially large capital gains tax exposure and create a solid income stream
- » You receive a large charitable deduction when you create the trust
- » The charities listed receive a much larger gift than you might have thought possible



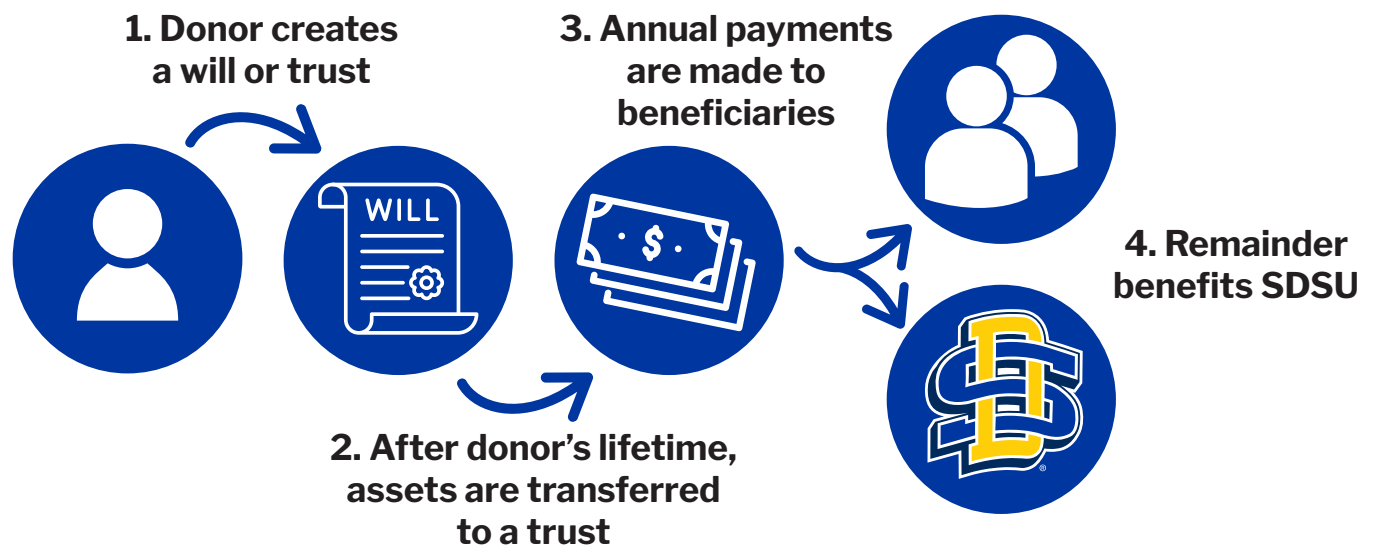


## Income Gifts for Heirs and Charity (Give-It-Twice)

Many of our Jackrabbit families have children and grandchildren that they want to help with an inheritance. They also want to support SDSU and other charities through their estate plan. That's where a creative concept known as a "Give-It-Twice" trust can become useful.

### BENEFITS

- » Pacing an inheritance for children and/or grandchildren
- » Using taxable assets, like traditional IRAs, to distribute income over a period of years
- » Revocable in nature, as the trust would be funded through estate



### DID YOU KNOW?

With the SECURE Act being passed in Congress at the end of 2019, children and grandchildren who receive retirement assets only have 10 years to take out their inheritance from the taxable accounts. With a "Give-It-Twice" trust, your heirs would have up to 20 years' worth of income, doubling the timeline that you can help family. In year 21, SDSU and your other chosen charities receive a substantial estate gift.

# Gees Give Back to What They Care About

By Lura Roti



Ask Dan and Rae Jean Gee why SDSU is part of their estate planning, and they quickly respond.

“The simple answer is, SDSU was so good to us.”

## **Gophers become Jackrabbits**

Dan and Rae Jean Gee moved into married student housing on the campus of SDSU in 1965 so that Dan could pursue a master’s degree and eventually a Ph.D. in animal science.

Recent graduates of the University of Minnesota, the couple had been actively engaged as Gophers. Dan was a member of the livestock and dairy judging teams, served as President of the Block and Bridle Club, and worked in the campus Meats Lab. Rae Jean was involved in Home Economics Club and worked in the bio-chemistry lab.

It didn’t take long for the new Jackrabbits to get involved at SDSU and in the community of Brookings. Rae Jean became an active member of the Brookings Homemakers Club. She also began working in the SDSU Poultry Department, followed by the USDA Northern Grain Insect Research Lab.

“What made my job most fun was I got to work mostly with SDSU athletes who needed summer jobs in Brookings,” said Rae Jean.

Rae Jean and Dan have been Jackrabbit Basketball season ticket holders since 1969. The couple volunteered to chair the SDSU Festival of Champions, an event that honored academic and athletic accomplishments of student-athletes, because their daughters – all graduates of SDSU – played college sports: Jennifer joined the softball and golf teams while Julie and Jessica were also on the golf team.

## **Animal Science 101**

While pursuing his master’s, Dan reconnected with Dr. Paul Kohler.

Dan first met the long-time animal science professor when Kohler was the swine judge at the Lyon County (MN) 4-H Swine Show. As an undergrad, Dan was a member of the University of Minnesota Livestock Judging team, so Kohler asked Dan to serve as assistant coach for the SDSU Livestock Judging Team.

Passionate about livestock judging, Dan immediately said yes.

“Dr. Paul Kohler became my mentor,” Dan said. “He was instrumental in everything I did.”

While driving the judging team home from the National Western Livestock Judging competition in Denver, Kohler let Dan know he was thinking of retiring. “He asked if I was interested in taking over his position as livestock judging coach and animal science professor, and I accepted,” said Dan.

Dan began teaching Animal Science 101, as well as Livestock Evaluation and Marketing, in 1969. He continued teaching both courses until his retirement from SDSU in 1999.

“I loved meeting all these bright-eyed kids, helping them adapt to college and life,” Dan explained. “I got to teach long enough to follow them through their careers. I attended many of their weddings and ended up teaching some of their children.”

Dan coached Collegiate Livestock Judging for 17 years. Under his guidance, the team was dominant in every major contest they competed in, including the North American Livestock Exposition. To this day, Dan and Rae Jean remain closely connected with the individuals he coached.

Teaching and coaching agriculture students for 30 years, Dan got to know many of South Dakota’s agriculture leaders, first as students and then as friends, including the 20th President of South Dakota State University, Dr. Barry Dunn.

### **It’s about connecting with people**

After retirement, when he was asked to serve as executive director for the first South Dakota Ag and Rural Leadership (SDARL) Class, Dan knew right away who to ask to participate.

“A large percentage of the first few SDARL classes were made up of former livestock judges,” Dan explained.

Dan served as executive director of SDARL from 1999-2012, and Rae Jean worked right alongside him.

“Rae Jean is the best helper I could have asked for,” Dan said. “In the early years, I had so many things to do – fundraising, programming, organizing travel. Rae Jean would make her way around the room getting to know all the participants.”

A natural conversationalist with an innate ability to put people at ease, Rae Jean was asked to serve on the welcome committee for St. Thomas More Church in retirement. Growing

up, Rae Jean’s parents placed a lot of emphasis on their faith. She also credits her mother with her love of gardening.

“My mother and grandmother both belonged to the state and national iris society,” explained Rae Jean. She continued the legacy, raising 250 varieties of irises on the acreage where she and Dan lived before retirement. When they moved into Brookings, Rae Jean donated her collection to McCrory Gardens.

Avid golfers, Rae Jean and Dan also donated several irises to Brookings’ Edgebrook Golf Course. During the summer months, they volunteer their time weekly to plant and maintain several garden beds.

When asked why they make time to volunteer in retirement, the Gees quickly respond.

“The world would be a lot better off if more people gave back to what they cared about.”

To give back to the places and honor the people they value, the couple worked with the SDSU Foundation to establish the Dan and Rae Jean Gee Charitable Remainder Trust.

As a remainder trust, when Dan and Rae Jean pass, their estate will first go in full to their three daughters and then to SDSU, McCrory Gardens, and St. Thomas More Catholic Church.

**“Giving back this way is a no-brainer,” Dan said. “We can give back to the university and our church and not take anything away from our girls.”**

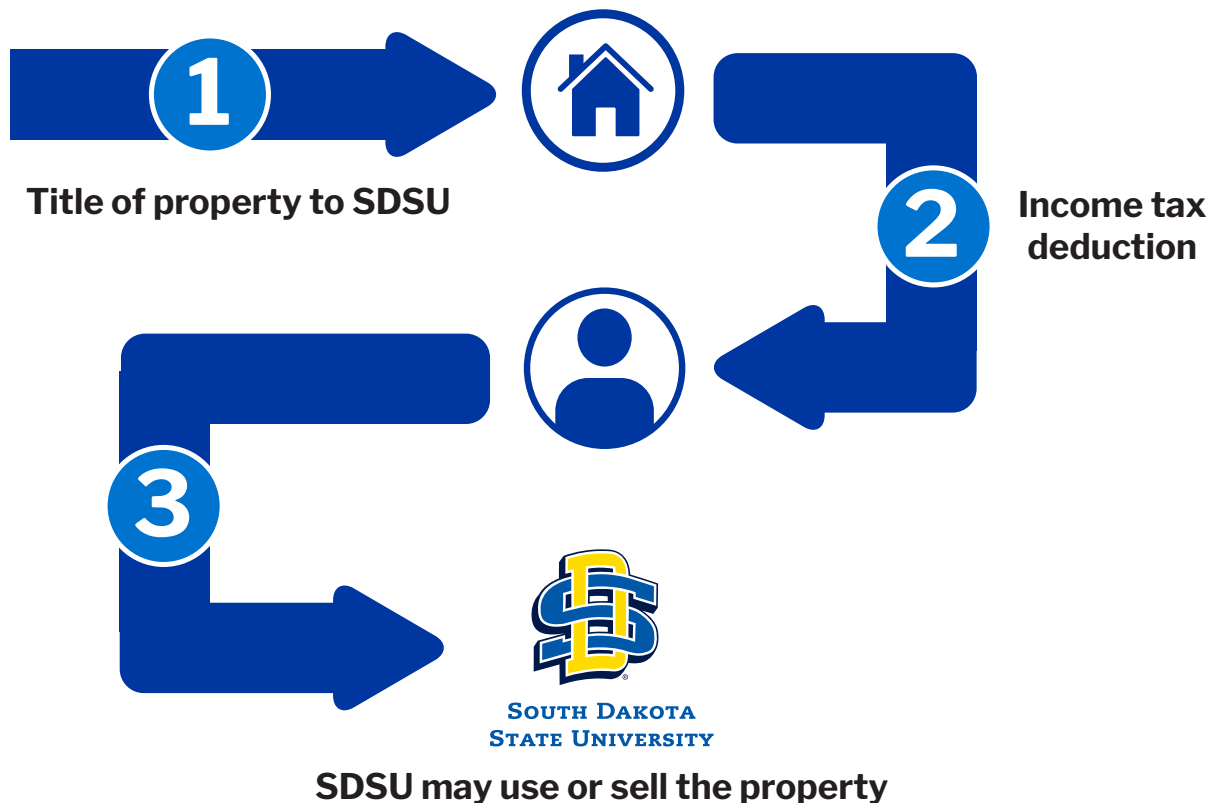
The trust will reinforce the Livestock Judging Endowment in honor of Dr. Paul Kohler and Dr. Dan Gee; establish the Dan and Rae Jean Gee Scholarship within the College of Agriculture, Food and Environmental Sciences; reinforce an existing endowment established to sustain the beauty of McCrory Gardens; and provide funds to St. Thomas More Catholic Church.

## Real Estate Gifts

You have a vacation home or a piece of farmland that you no longer need. By gifting your appreciated asset to the SDSU Foundation, you can make a large impact on campus and save yourself a significant amount of taxes.

### BENEFITS

- » Using an asset you no longer want or need to give generously AND avoid unnecessary taxes
- » Maximizing the value of your gift BEFORE you sell



### DID YOU KNOW?

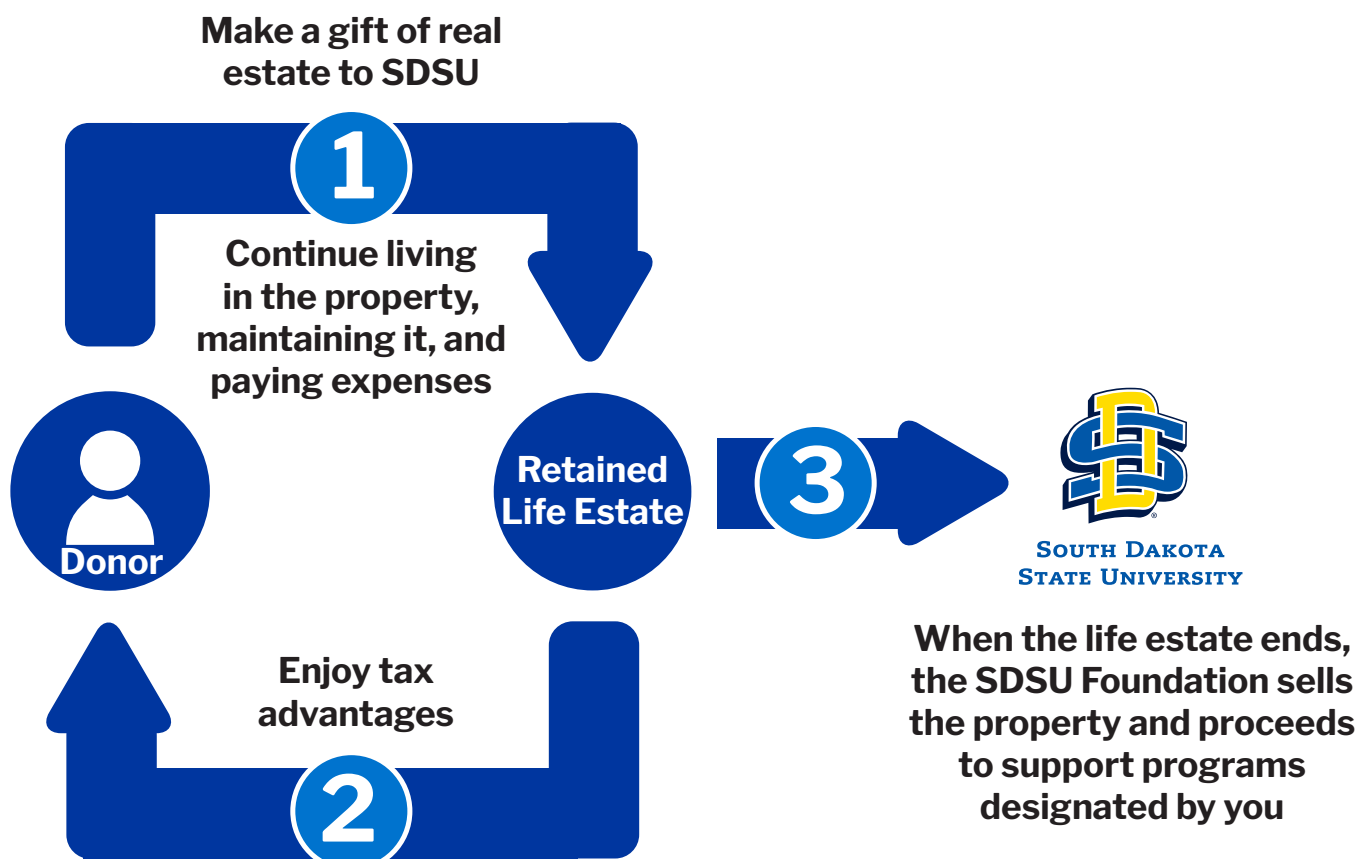
You can use appreciated real estate to fund a charitable remainder trust, allowing yourselves to receive income for the rest of your lives and making a tremendous contribution to the SDSU Foundation and additional charities.

## Real Estate Gifts (Retained Life Estate)

You want to leave your land or house to the SDSU Foundation through your estate, but you'd prefer to keep the asset under your control for the rest of your lives. A retained life estate gift allows the donor to contribute real estate to the SDSU Foundation through an agreement that allows you usage of the land or home through your life.

### BENEFITS

- » Large tax deduction for value of the future gift to SDSU
- » Great way to ensure the smooth passage of real estate to the SDSU Foundation



## Gifts of Grain, Livestock, or Machinery

Farmers and ranchers have so much invested in the future of their operations. When it comes time to support the causes you care about, it may make more sense to donate gifts of grain and/or livestock before the sale.

When you're taking a truck full of soybeans to the elevator or a pot load of cattle to the sale barn, gifting a portion of the sale to a worthy cause you care about is much less painful than writing a check. Once delivered, you never miss it!

### BENEFITS

- » Reduce taxable income by gifting commodity to charity before sale
- » Farm and ranch assets can establish gifts that provide you with income, such as a charitable remainder trust



**Deliver grain to elevator**



**Ask elevator to transfer x number of bushels to SDSU Foundation**



**SDSU Foundation authorizes sale of grain and receives proceeds**



**SDSU Foundation provides confirmation to farmer of bushels transferred**

### DID YOU KNOW?

A giving strategy that has grown in popularity recently is the creation of a charitable trust to provide a farmer's family with a steady stream of income through retirement by utilizing tangible personal property. By gifting grain, livestock, and/or machinery to a charitable trust, farmers and ranchers can take care of themselves in retirement, all while building an extraordinary charitable legacy at SDSU and other causes they choose to support.

## Sylvan Circle The Legacy Society for South Dakota State University



Alumni and friends who make a commitment to the future support of SDSU are honored with membership in the Sylvan Circle, a recognition society for planned and deferred giving.

The recognition society takes its name from the Coolidge Sylvan Theatre, one of the treasured landmarks on the SDSU campus.

Membership in the Sylvan Circle is available to those individuals who have arranged and documented a non-contingent gift to go directly to the SDSU Foundation for future support of South Dakota State University in their estate and financial plans.

- » A bequest in a will or revocable living trust to the South Dakota State University Foundation
- » A life income agreement, such as a charitable remainder trust
- » A life estate in a residence or farm with the SDSU Foundation as the ultimate recipient
- » Designating the SDSU Foundation as a beneficiary of an IRA or other retirement plan

Sylvan Circle Members will receive:

- » Permanent recognition as a Sylvan Circle member
- » Inclusion in a lifetime giving society based on the estimated or actual value of the planned gift, combined with all other lifetime gifts and credits
- » Listing of member names in the annual Foundation STATELY Review
- » Listing of member names on the SDSU Foundation Planned Giving website
- » An invitation to the annual Sylvan Circle recognition event
- » A lapel pin given to each member recognizing their membership
- » Special university publications, reports, and notification of events
- » The satisfaction of helping assure future quality at South Dakota State University

We would like to recognize you for your generosity and commitment and ensure that your gift impacts your wishes on campus. Please call us at (605) 697-7475 to visit more today!

*Beneficiary Designation*  
South Dakota State University Foundation  
815 Medary Avenue  
Brookings, SD 57006  
Tax ID #: 46-0273801



# **BOLD & BLUE**

**SOUTH DAKOTA STATE UNIVERSITY FOUNDATION**

**SDSU FOUNDATION  
OFFICE OF GIFT PLANNING**

815 Medary Avenue  
Brookings, SD 57006  
(605) 697-7475  
[GiftPlanning@SDStateFoundation.org](mailto:GiftPlanning@SDStateFoundation.org)  
[www.sdstatelegacy.org](http://www.sdstatelegacy.org)